

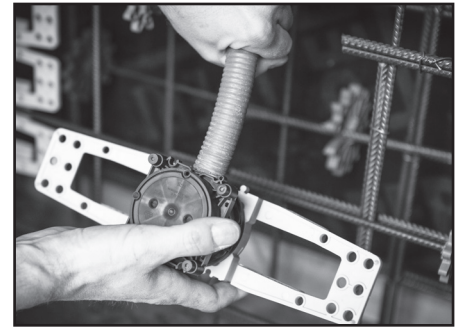
Rohreinführung mittels Stanzzange oder Lochstanze

Use hand hole punch or hole punch for the conduit entry



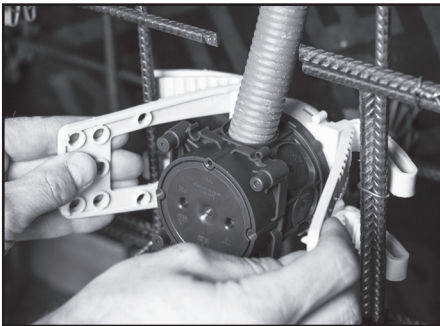
Grünes Bodenteil dichtet sicher ab

Green bottom section provides a reliable seal



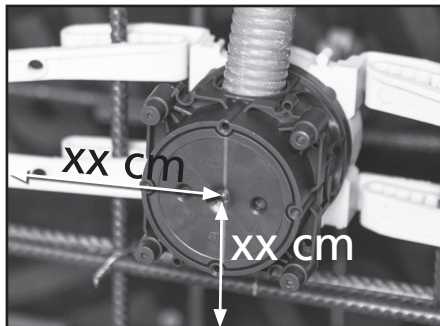
Rohre einführen

Insert the conduits



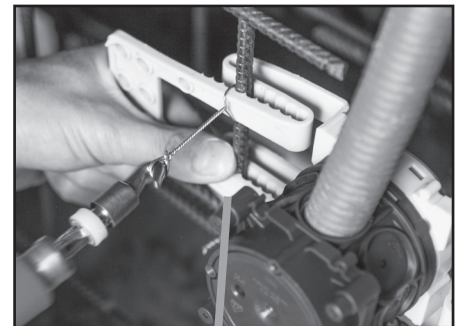
Bewehrungsdose einclipen

Clip on the reinforcement box



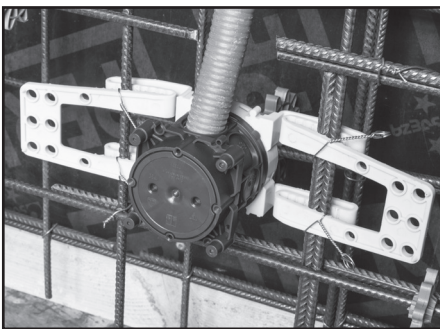
Einmessen und positionieren

Measure and position



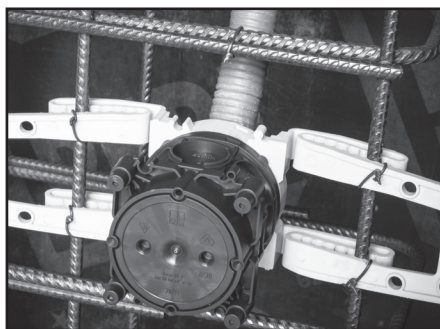
Bewehrungsdose mit Rödeldraht 4-fach fixieren

Fix the reinforcement box in place at 4 points with tie wire



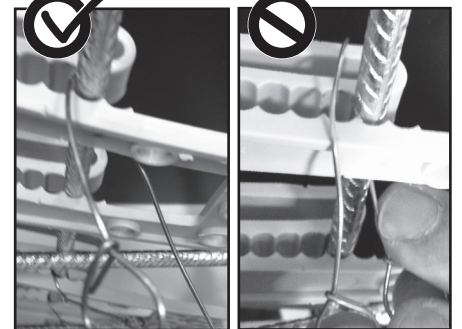
Einsetzbar für Betondeckungen
971 165 01 U71 BWD GVD-2 -60 von 20 - 60mm
970 160 01 U71 BWD WAD-35 von 20 - 40mm

*Can be used for concrete coverings
971 165 01 U71 BWD GVD-2 -60 of 20 - 60mm
970 160 01 U71 BWD WAD-35 of 20 - 40mm*



Rohreinführung rückwärtig über Kuppel ohne die Armierung zu schneiden

Conduit entry with dome without cutting the reinforcement



IBT Bewehrungsdose | IBT reinforcement box
Montageanleitung | Installation instructions